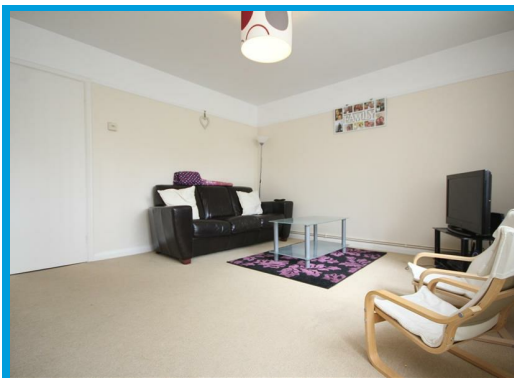




Telford Court, Clandon Road Guildford, Surrey GU1 2EA

£1,525 PCM

Presented in excellent order throughout, this two double bedroom apartment is located in a peaceful, leafy town centre location with use of communal grounds and parking.



# Description

Located moments from Guildford town centre in a highly sought after position, this two double bedroom apartment is presented in excellent order throughout.

The accommodation comprises a hallway leading a good size lounge with doors to the communal grounds, a large master bedroom with ample built in wardrobes, a further double bedroom, a bathroom with shower and a recently fitted kitchen with dining area.

Further features include parking and communal gardens.

